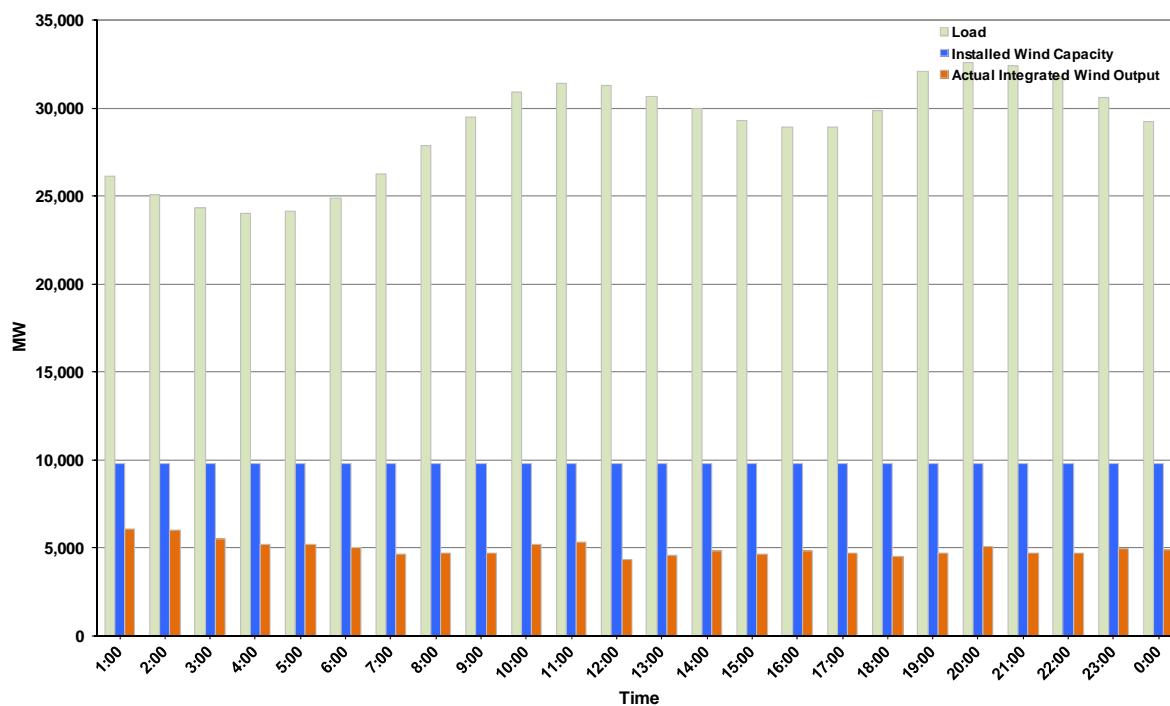




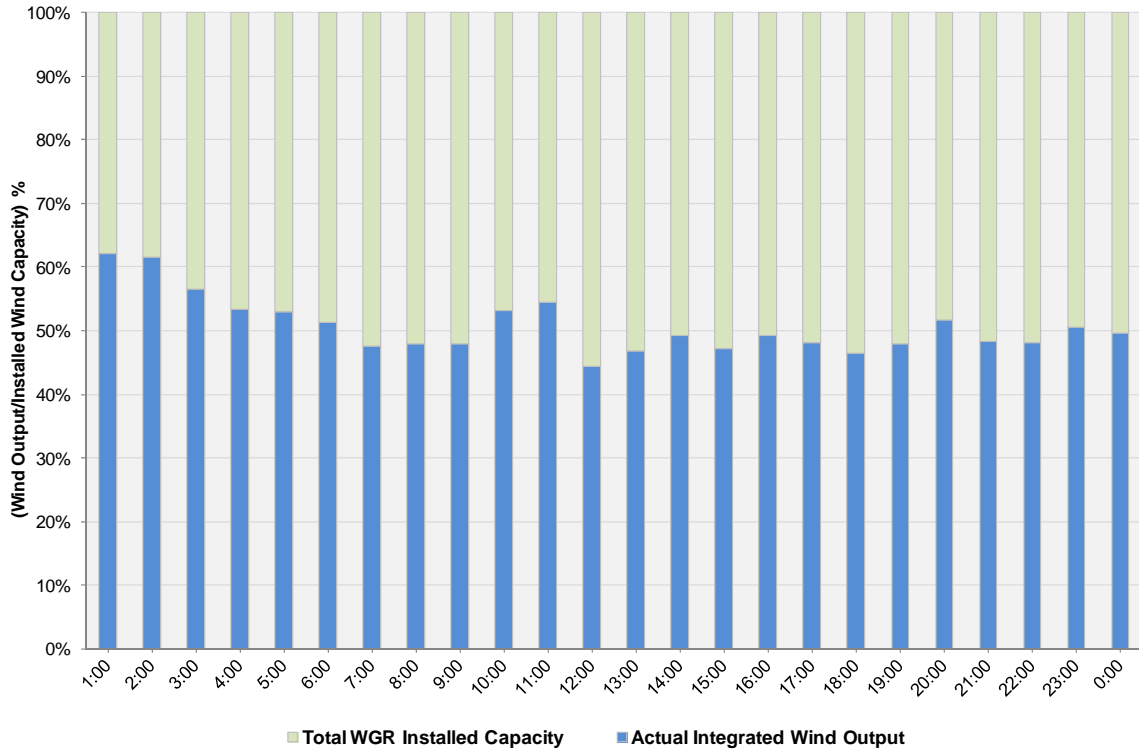
ERCOT Grid Operations Wind Integration Report: 02/04/12

Peak Load	35,768 MW
Load Peak Hour (HE)	22
Wind over Peak	946 MW
Wind Record 10/07/11	7,400 MW
Max Wind Value	5,386 MW
Wind Peak Time	01:40
Wind Integration %	19.84%

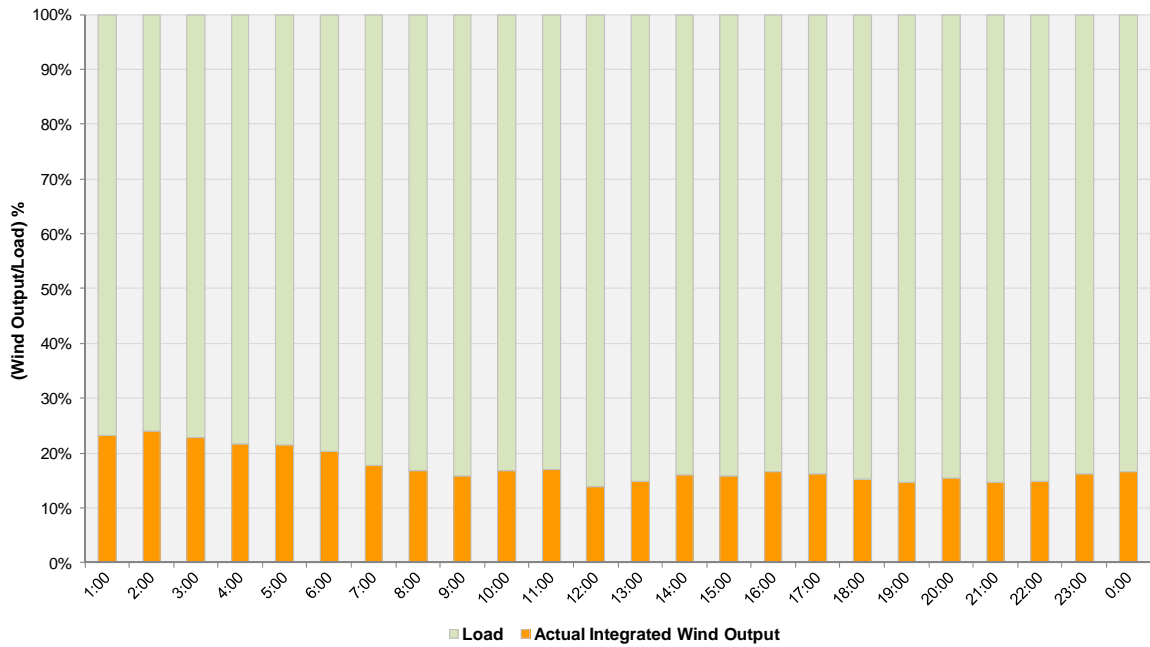
**Hourly Average Actual Load vs. Actual Wind Output
02-04-2012**



Actual Wind Output as a Percentage of the Total Installed Wind Capacity
02-04-2012



Actual Wind Output as a Percentage of the ERCOT Load
02-04-2012



ERCOT Load vs. Actual Wind Output 1/28/2012 - 2/4/2012

